

A photograph of two men in a field. The man on the left is older, with white hair, wearing a red and black plaid shirt, and is smiling while holding a green plant. The man on the right is younger, wearing a blue and white plaid shirt, and is looking at the plant. The background is a vast, green field under a bright sky. A white rectangular box is overlaid on the image, containing text.

SANBIO.

The novel approach of farming.

The multi-functional ferti-activators for all crops.



WHY SANBIO?

»We help you to **rescue**
your **harvest**, to make
more **profit** and
to **save** costs.«

Jörg MEYER
Founder and CEO





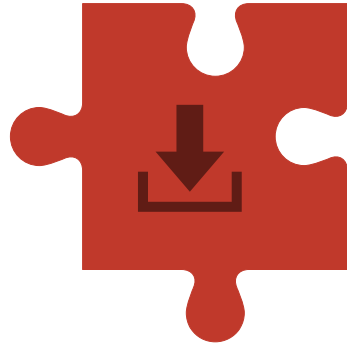
THE NOVEL STRATEGY

THE MARKET PROVIDES

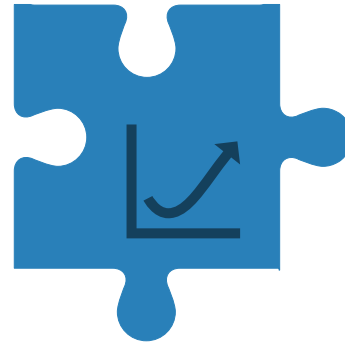
individual standard products of each category with a single purpose only.



Fertilizers



Soil improver



Stimulators



Pesticides

SANBIO COMBINES TO MULTI-FUNCTIONAL

Sanbio® combines **core functions** from each category.
It works systemically, preventively and curatively with associated natural mechanisms.

Pesticide

Stimulator

Fertilizer

Soil improver



MULTI-LEVEL APPROACH



8. GROWTH CONTROL

7. INTEGRATED CROP & PEST PROTECTION

6. RESPIRATION & TRANSPIRATION

5. CONTROL OF PHOTOSYNTHESIS

4. ENHANCED POLLINATION

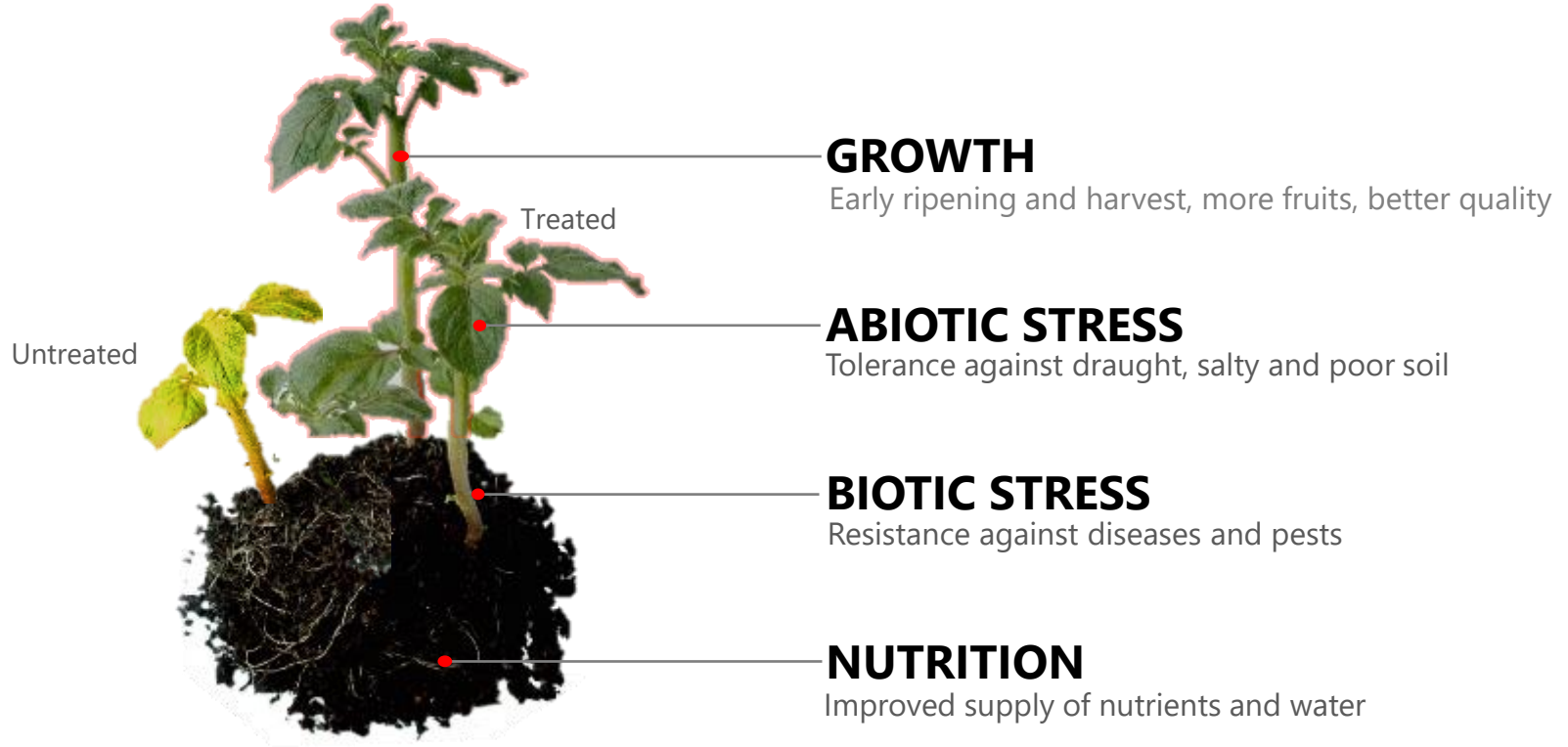
3. ADJUSTMENT OF RHIZOPLANE MICROBIOM

2. MODELING OF ROOT ARCHITECTURE

1. NUTRITION & SOIL FERTILITY

GET THE FULL CONTROL

Sanbio® provides strong **protection** against soil borne, fungal diseases, pathogens and provides control of **growth** promoting factors through its special production technology.



PRODUCT LINE

SANBIO PRODUCT LINE



YOUR BENEFIT



MORE YIELD

by increase
your harvest



BEST QUALITY

with tasty and attractive
fruits and long shelf
time



SAVE MONEY

on fertilizer and
pesticides



HIGHER REVENUE

by sell your fruits earlier
than competitors

FARMER APPROVED



AWARD WINNER

AWARD WINNER



MADE IN GERMANY.



"CROP POWER 85" AWARD
GERMANY 2008



"INNOVATIVE THROUGH
RESEARCH" AWARD
GERMANY 2020-2021



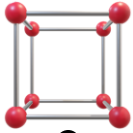
PRESTIGE AWARD
"BIOTECH COMPANY OF
THE YEAR"
UK-GERMANY 2020

OUR TECHNOLOGY



BIO-ELECTRICAL STIMULATION

INNOVATIVE PROGRAMMING MAKES THE DIFFERENCE



Specific composition

Blend of selected components and raw materials

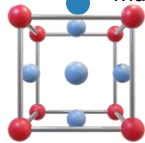
01



02

Programming

The activation process contains surface modification, polarization and supercharging in an electric-magnetic field.



Infiltration into plant cells

The Mg-Fe-S-Cluster is transported into the plant cells by applying the product.

03

04

Bio-electrical stimulation

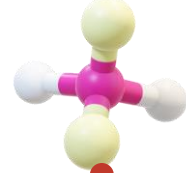
The electrical membrane potential of the cells is modified by interaction of charges.



05

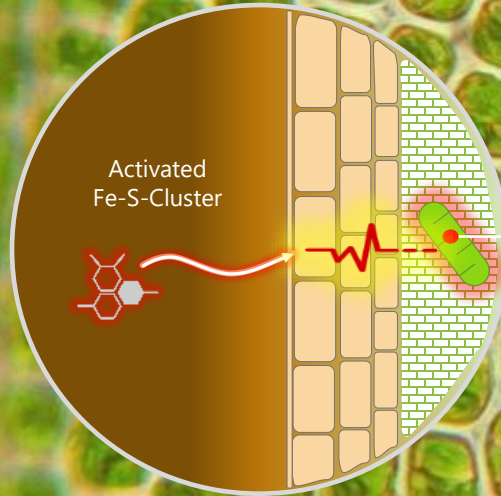
Triggering

The forced secretion of phytohormones, proteins, amino acids triggering growth, and immune system



UTILIZE YOUR **FULL POTENTIAL**

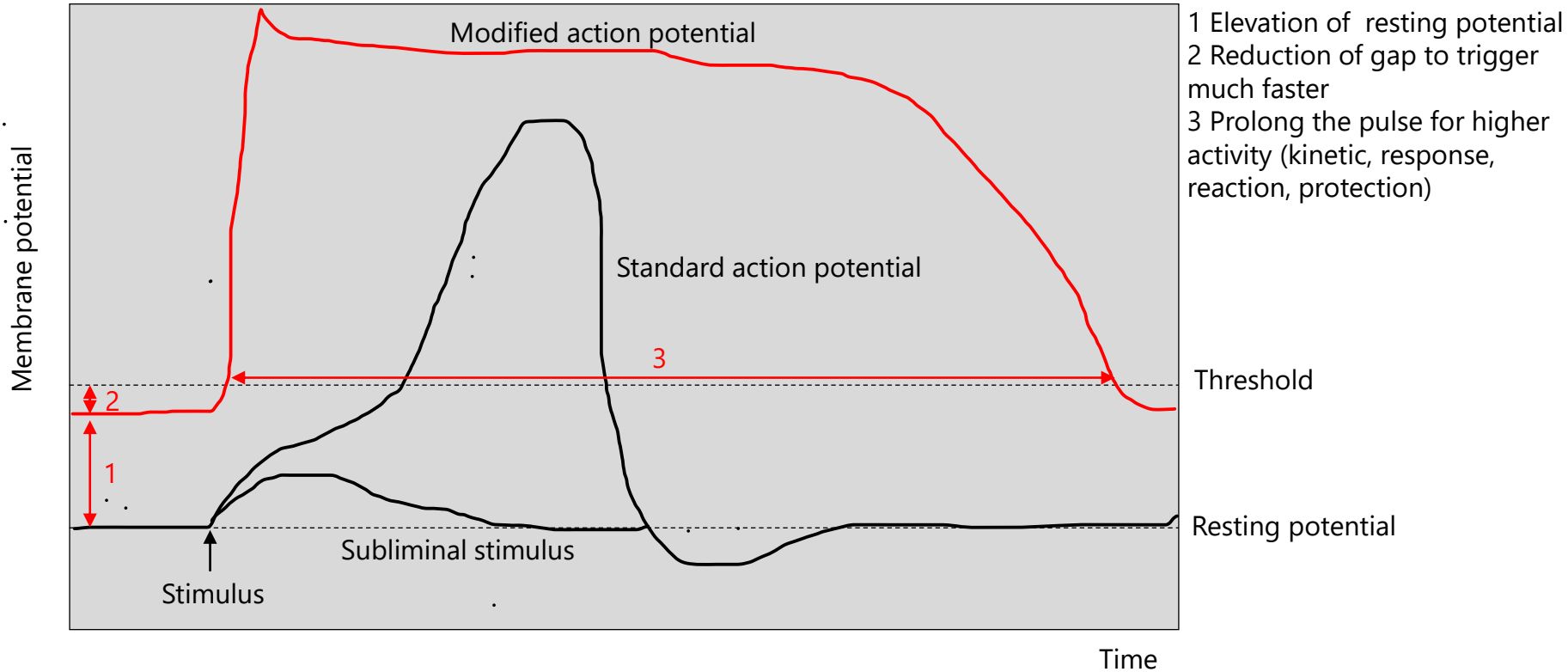
The raw material is activated in a special process: bio-catalytic stimulation by surface modification. The contained Magnesium-Iron-Sulphur-Clusters are encoded in an electromagnetic field. In the plant cell, the frequency-coded signals are transmitted from the clusters to the plant cell. This **electromagnetic stimulation** can affect specific phytohormones, proteins, amino acids, immune system and can **trigger specific functions**.



STIMULATION OF PLANT CELL

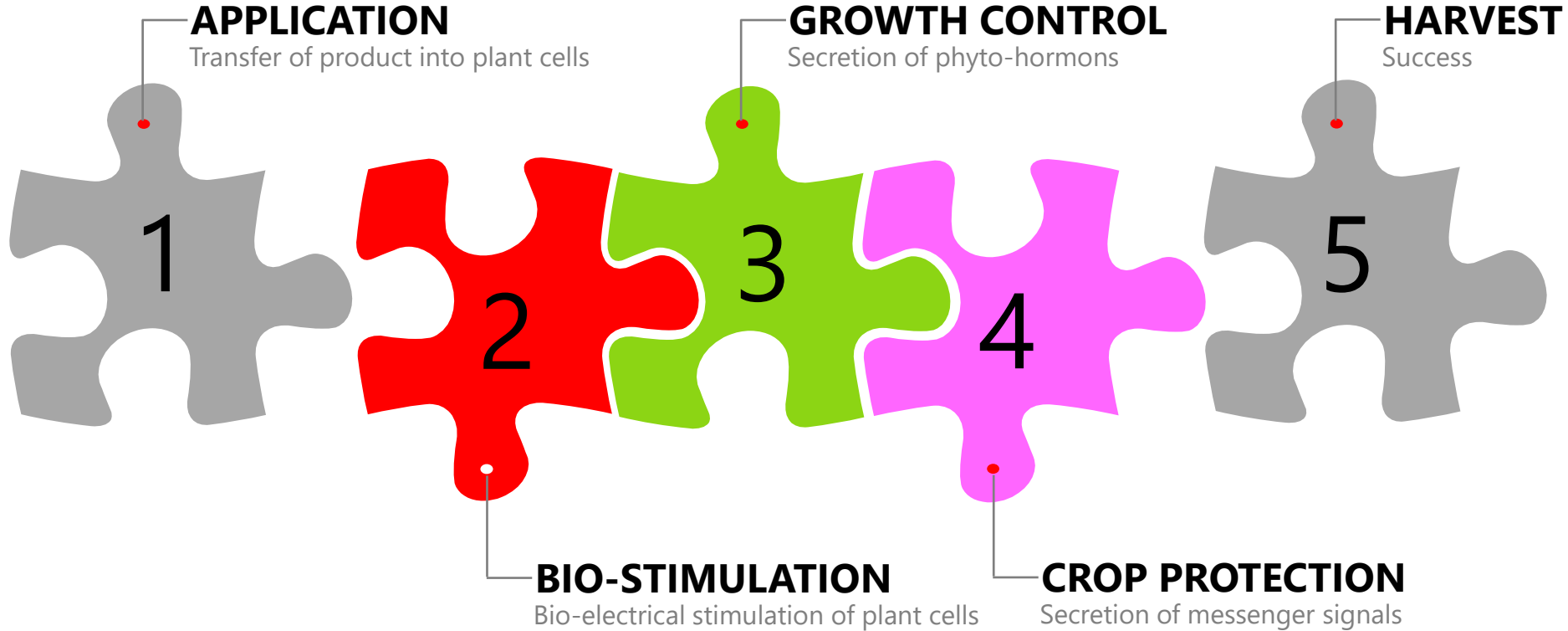
Interaction of bio-electrical signals

MODIFICATION OF MEMBRANE POTENTIAL



MODE OF ACTION

SCIENCE AT WORK



MULTI-FUNCTIONAL SYSTEM

Control of	EPSOMIT	TITAN	PLANTA	VITAL
Root architecture				
Photosynthesis				
Nutrition				
Abiotic tolerance				
Biotic resistance				
Growth control				
Transpiration, Respiration				
Pollination				
Adjustment of rhizoplane microbiom				
Root recovery (bio-nematicide effects)				



SIMPLE APPLICATION

SAVE TIME. SAVE MONEY.

The soluble products **PLANTA** and **VITAL** are applied directly into the root zone by fertigation .

FERTIGATION

The full soluble products **EPSOMIT** and **TITAN** are applied foliar. They can be mixed with most fertilizers and agrochemicals and can be applied in one step. This saves time and effort. The foliar application ensures fast protection and accelerates the growth.

FOLIAR APPLICATION

A photograph showing a cross-section of a grass mat. The top half consists of a dense layer of bright green grass blades. Below the blades is a thick, dark brown layer of soil containing a complex network of roots. The roots are densely packed and extend downwards, illustrating the root architecture of the grass. A semi-transparent white banner with a red and black text overlay is positioned across the middle of the image.

CONTROL OF ROOT ARCHITECTURE

WITH LARGE ROOTS COMES **FULL ACCESS**

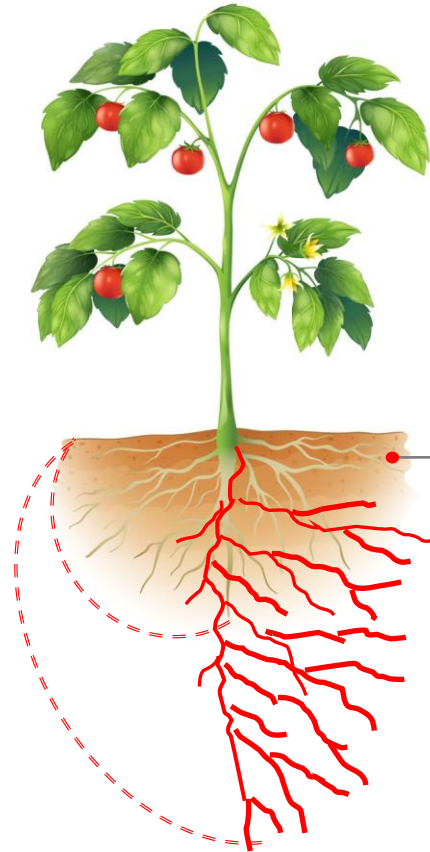
The activation of proteins which contribute to root elongation regulates the asymmetric cell division and cell proliferation in the root meristem. The significantly enlarged root mass can absorb much more water and nutrients and anchors the plant better in the soil.



ROOT SYSTEM

Development of root mass and root hairs to improve the supply

CONTROL OF **ROOT ARCHITECTURE**



ROOT SYSTEM

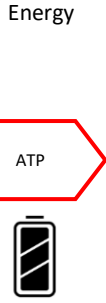
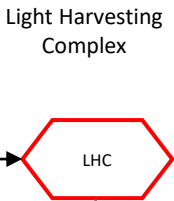
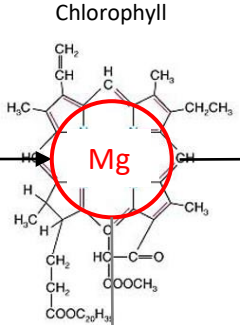
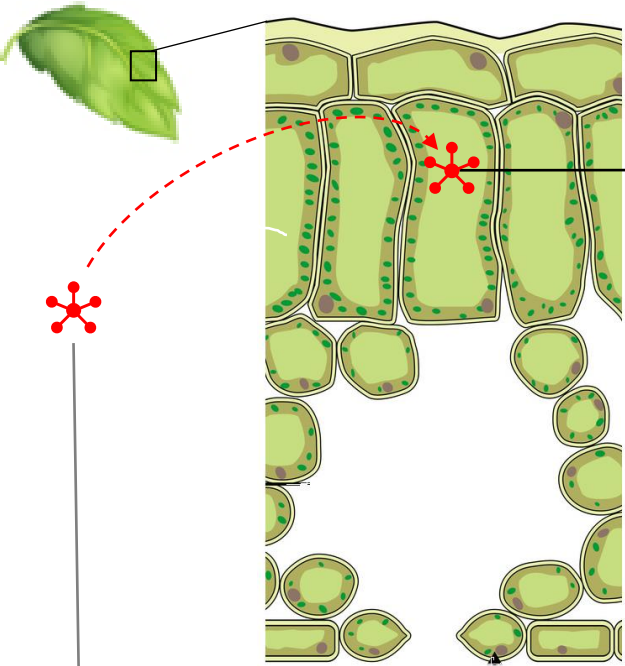
Increase of active surface
for nutrient and water
acquisition



A close-up photograph of several green leaves, likely from a tropical plant, showing prominent veins. The leaves are layered and overlap, creating a sense of depth. A white horizontal banner is superimposed across the center of the image, containing the text 'CONTROL OF PHOTOSYNTHESIS'. The word 'PHOTOSYNTHESIS' is in red, while the rest of the text is in black.

CONTROL OF **PHOTOSYNTHESIS**

CONTROL OF PHOTOSYNTHESIS



ENHANCED GENERATION
of energy use for growth processes

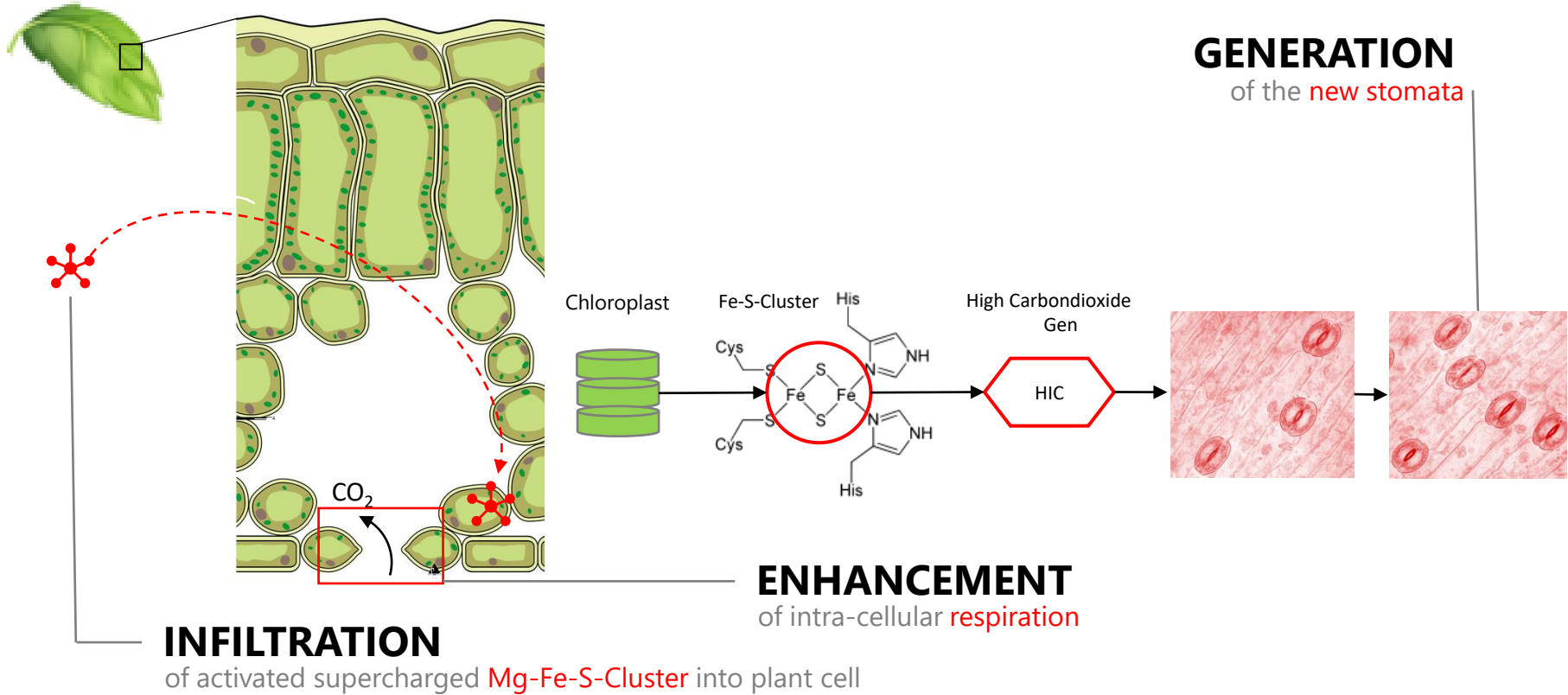
PROMOTION
of the development of chlorophyll

INFILTRATION
of activated supercharged Mg-Fe-S-Cluster into plant cell

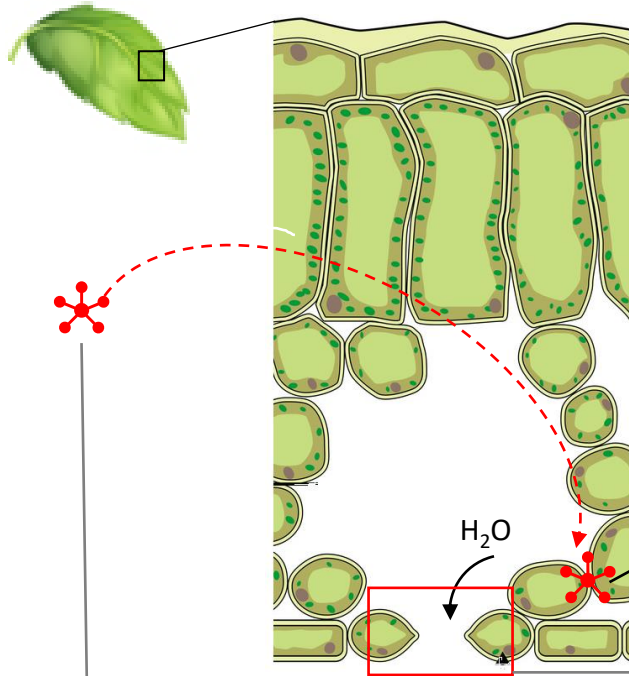
RESPIRATION & TRANSPIRATION



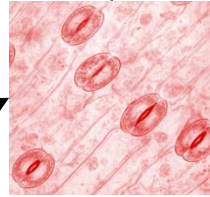
CONTROL OF INTRA-CELLULAR RESPIRATION



CONTROL OF WATER TRANSPIRATION



CONTROL
of the stomata opening



REDUCTION
of water transpiration



WATER SAVE

INFILTRATION

of activated supercharged Titanium into plant cell



ENHANCED POLLINATION

MORE FRUITS BY ENHANCED POLLINATION



IMPROVED POLLINATION

- Increased number of seeds
- Improved adhesion to stigma
- Better pollen germination on stigma
- Higher number of pollen tubes growing through pistil style and reaching the ovary
- More effective fertilization and seed formation

+20%
seeds



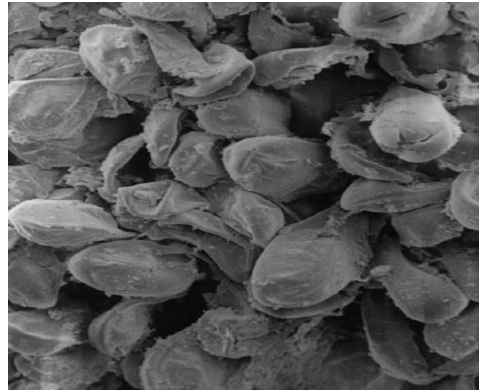
ENHANCED POLLINATION



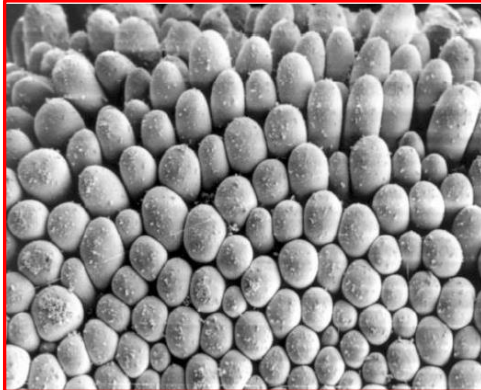
Sanbio TITAN improves receptivity of stigma, what positively affects pollination process through increased number of germinating pollen grains on stigma.



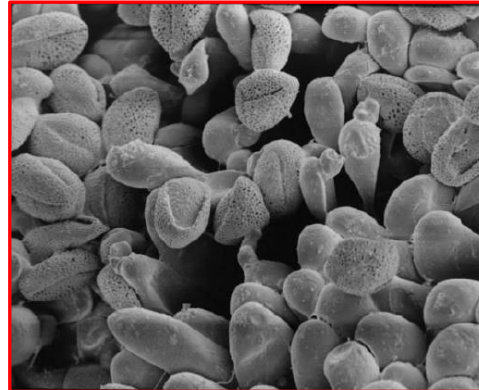
1: untreated



2: untreated



3: treated



4: treated

1: Weak receptivity of stigma and
2: low number of germinating pollen grains on untreated blossom.

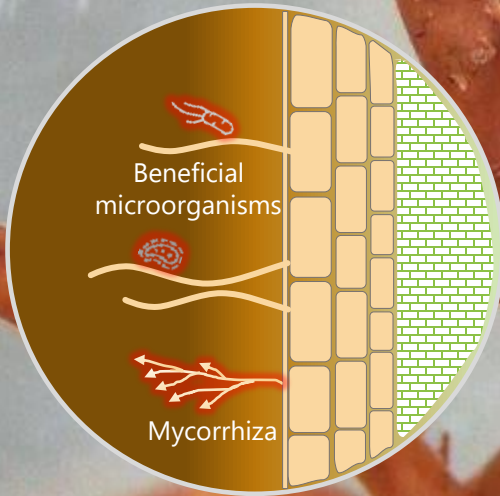
3: huge receptivity of stigma and
4: high number of germinating pollen grains on treated blossom with Sanbio TITAN.

A scanning electron micrograph (SEM) showing a complex network of yellowish, fibrous structures, likely plant roots or rhizosphere soil. Several large, reddish, rod-shaped bacteria are visible, some with long, thin flagella extending from them. The bacteria are distributed throughout the network, with some appearing to be attached to the fibers. The overall scene is a detailed view of the rhizosphere microbiome.

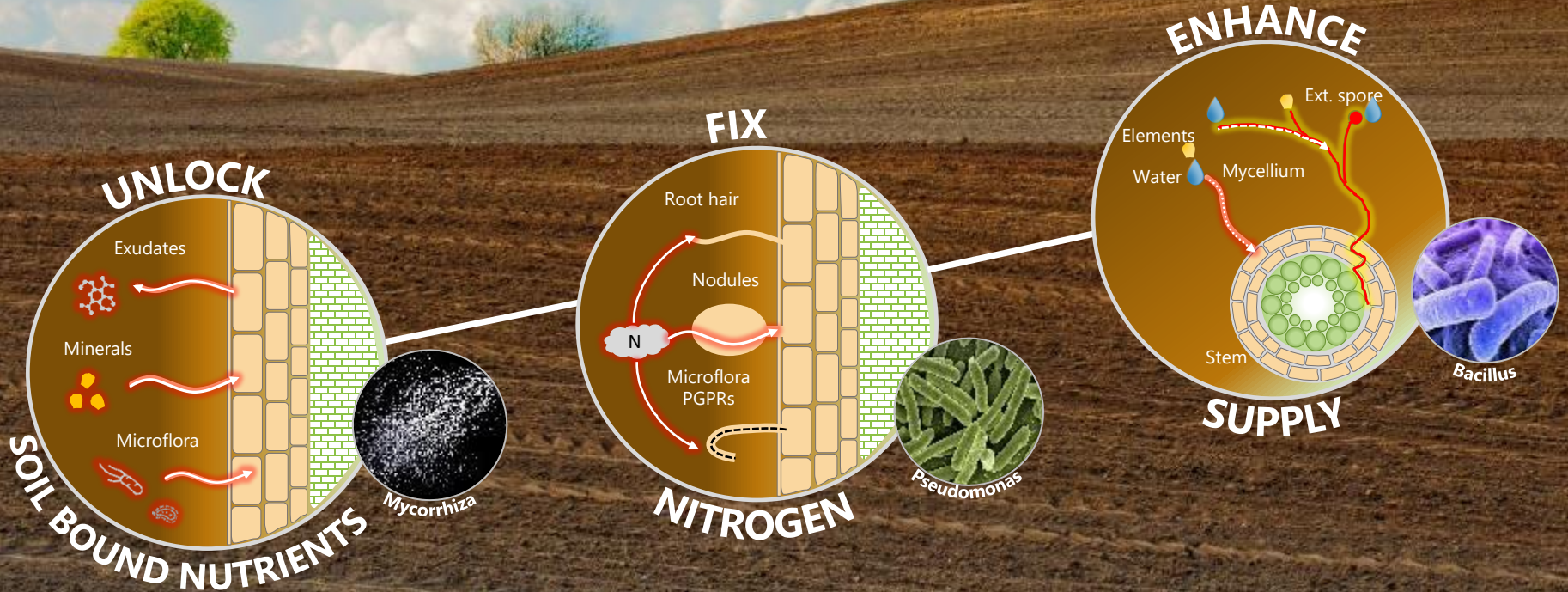
ADJUSTMENT OF RHIZOPLANE MICROBIOM

SUPPORT BY ENHANCED MICROBIOM

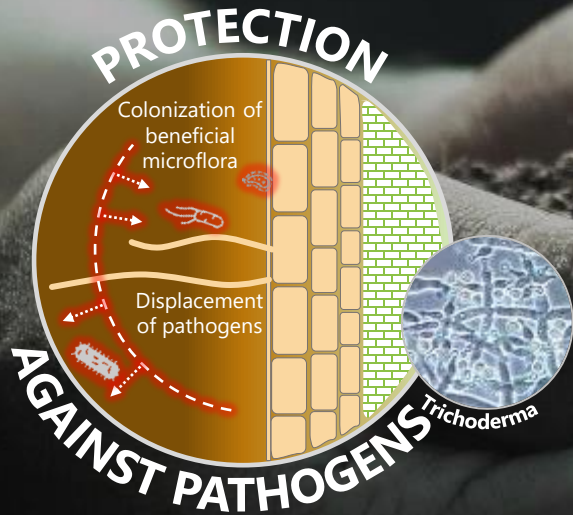
The product contains a blend of selected natural microorganisms and mycorrhiza fungi. Shortly after inoculation they colonize the enlarged root mass for symbiotic interactions. This augmentation results in improved access to essential nutrients and support of biocontrol ability.



THE PERFECT NUTRITION



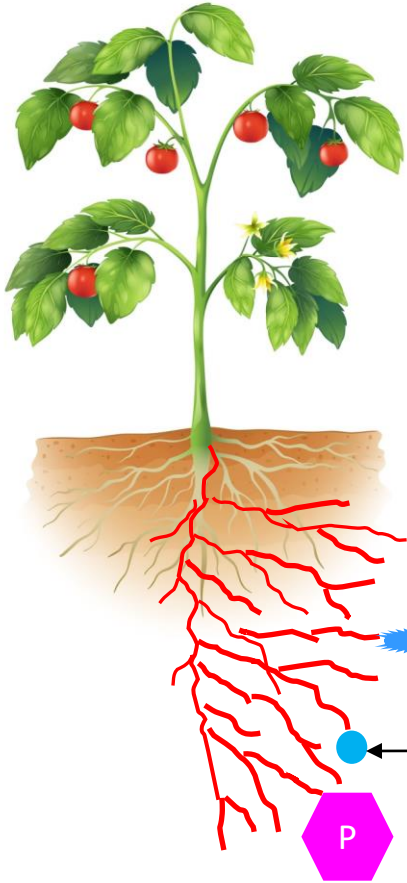
THE NATURAL CARE



A close-up photograph showing a person's hand holding a large quantity of small, light blue, spherical fertilizer granules. The hand is positioned above a young green plant with several leaves, which is growing in dark brown soil. Some of the fertilizer granules have fallen onto the soil around the base of the plant. The background is softly blurred, showing more of the plant and soil. A semi-transparent white banner with red text is overlaid across the middle of the image.

NUTRITION & SOIL FERTILITY

CONTROL OF NUTRITION



Colonisation

with **beneficial microorganisms**

- N fixing bacteria
- PGPR Rhizobacteria
- Mycorrhize

Displacement

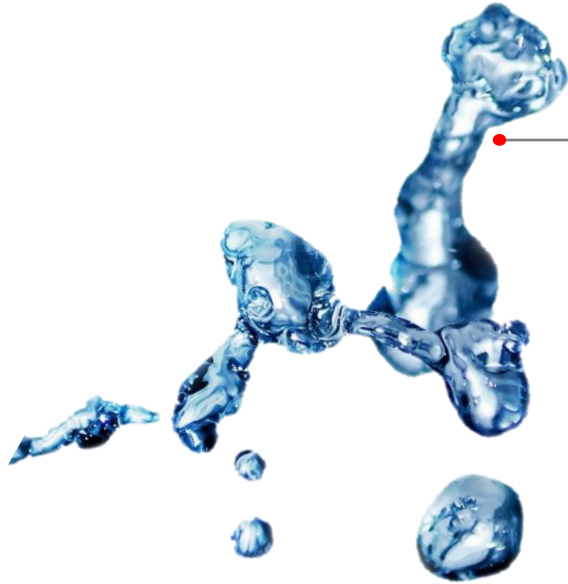
of **antagonists and pathogens**

Enhanced nutrition

- intensified **respiration**
- increased **ion exchange**
- improved **assimilation** of plant available nutrients

DON'T ABDICATE THE **ESSENSTIALS**

Optimized utilization of water and nutrients helps you to save valuable irrigation and expensive fertilizer.

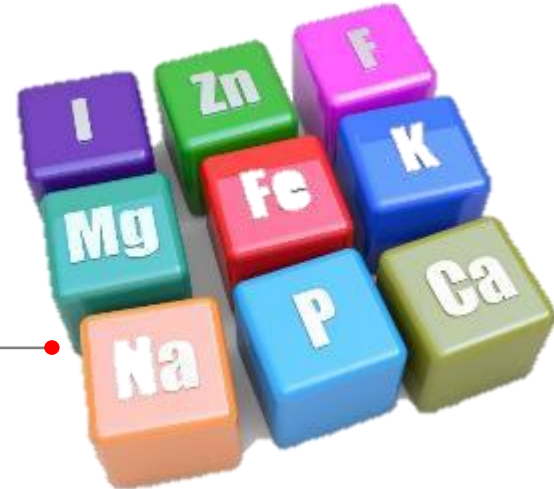


WATER

The most crucial and precious asset

NUTRIENTS

balance deficiencies





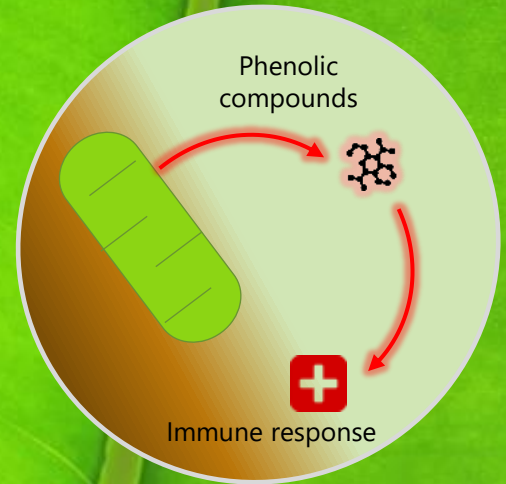
CROP PROTECTION



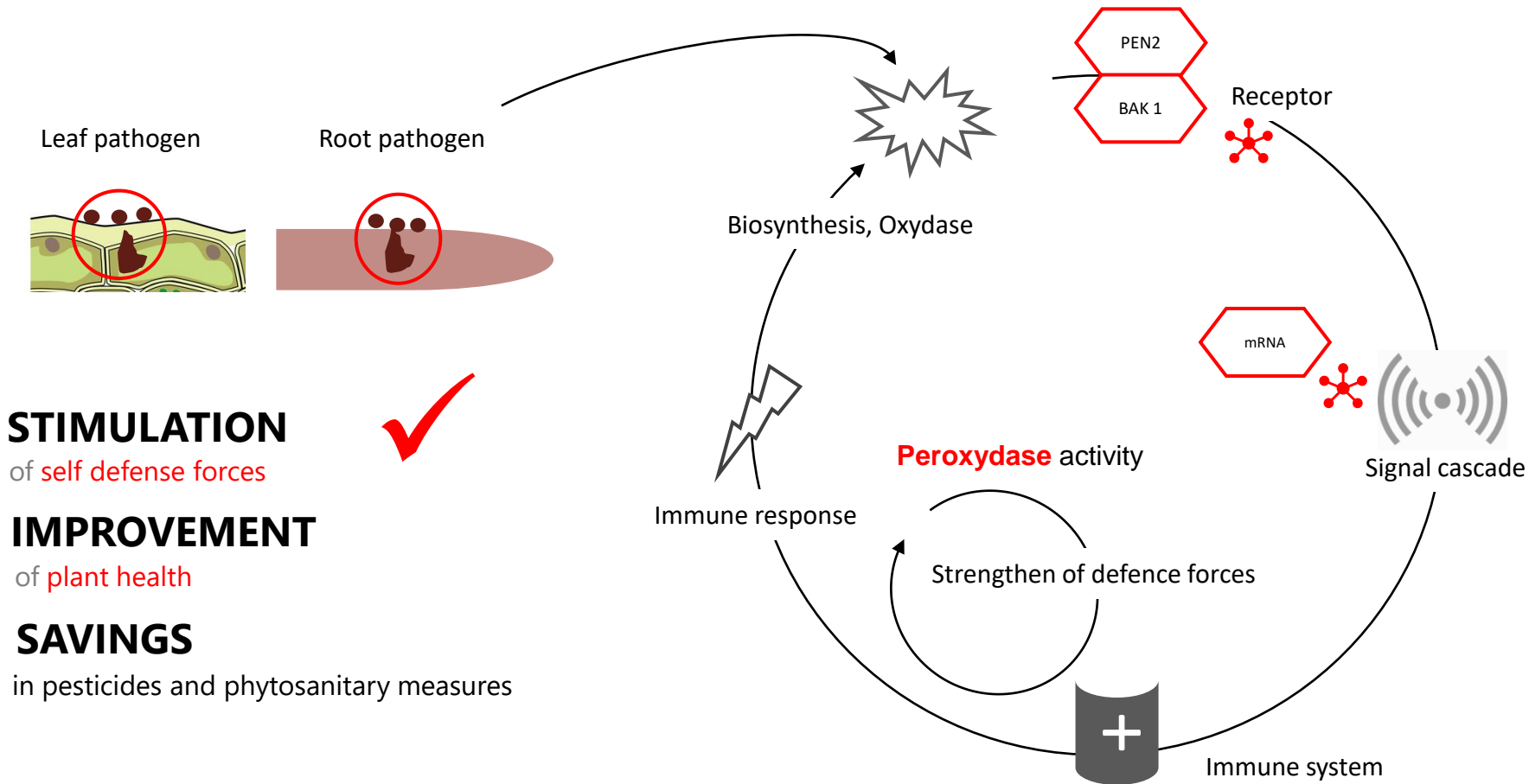
INTEGRATED CROP PROTECTION

Selective secretion of phenolic compounds and control of peroxidase activity speed up the local response to pathogen attack.

This activates the systemic immune system become activated and supports the plant to survive, recover and developing on fast way.



ACCELERATION OF IMMUNE RESPONSE



STIMULATION

of self defense forces

IMPROVEMENT

of plant health

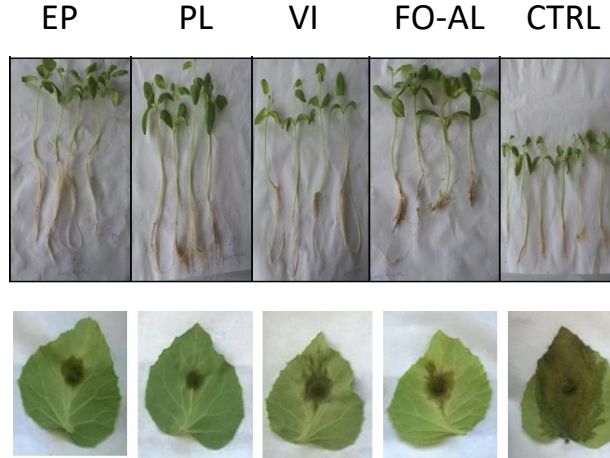
SAVINGS

in pesticides and phytosanitary measures

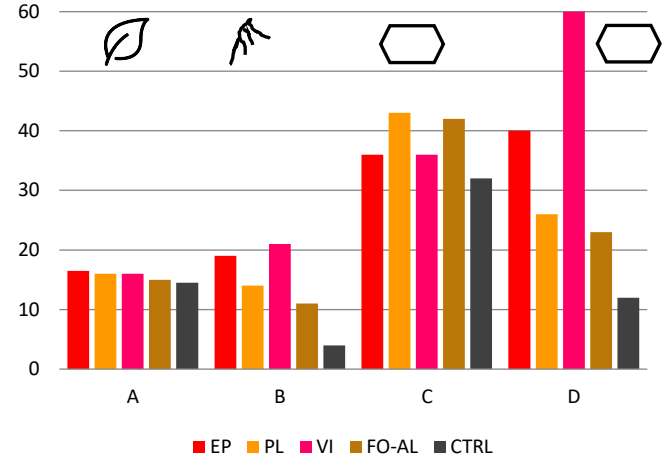
ACCELERATION OF IMMUNE RESPONSE



D 0 Start
 D+2 Application of products
 D+7 Inoculation with *Botrytis*
 D+9 Inoculation with *Fusarium ox.*
 Immune response
 D+15 Evaluation of kinetic



et al. Prof. W. Hamada, Laboratory of Genetics and Plant Breeding, INAT, Molecular Plant Microbe Interactions Institut, Tunis, 2015



A	Growth of leaves	EP	Sanbio EPSOMIT
B	Growth of roots	PL	Sanbio PLANTA
C	Peroxydase activity	VI	Sanbio VITAL
D	Phenolic compounds release	FO-AL	Fosetyl-Al, Bayer Crop Science
		CTRL	Control



ABIOTIC STRESS TOLERANCE

EXTREME TEMPERATURE

Tolerance towards heat, cold and frost

The activation of specific proteins on cellular level strengthens the tolerance and resistance towards abiotic stress factors. By that the crop plant is able to adopt and balance disorders, thus maximize growth, development and productivity even under unfavourable conditions.

SOIL TOXICITY

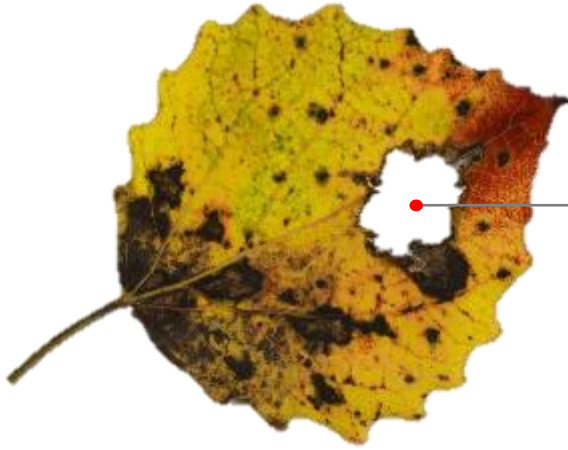
Tolerance towards salinity and heavy metals

DROUGHT & WATERING

Tolerance towards water deficit and flooding

BIOTIC STRESS RESISTANCE

The activated systemic immune system predisposes plants to become more resistant to subsequent pathogen attacks.

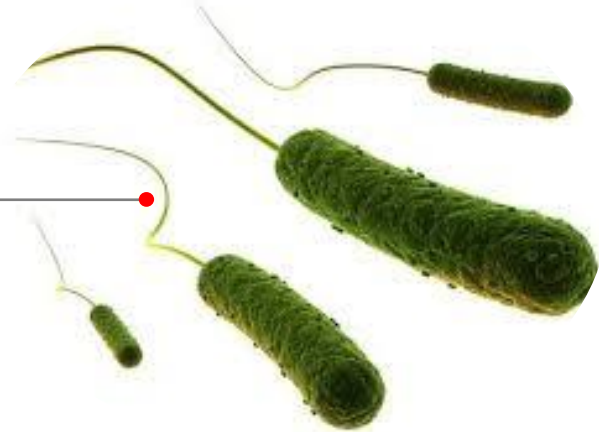


LEAF PATHOGENS

Resistance against main fungus-based and bacterial diseases and pests

SOIL PATHOGENS

Resistance to the main soil-borne diseases, e.g. Fusarium, Botrytis, etc.

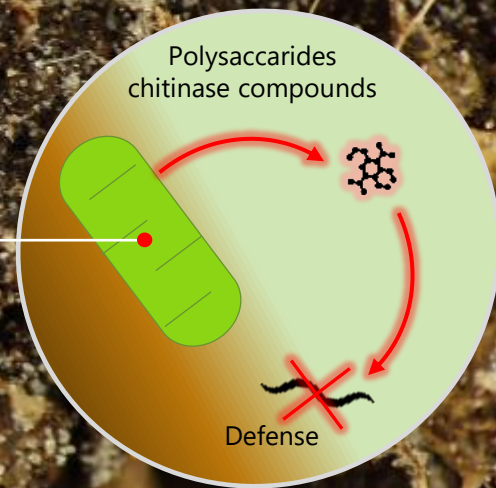


INTEGRATED CROP PROTECTION

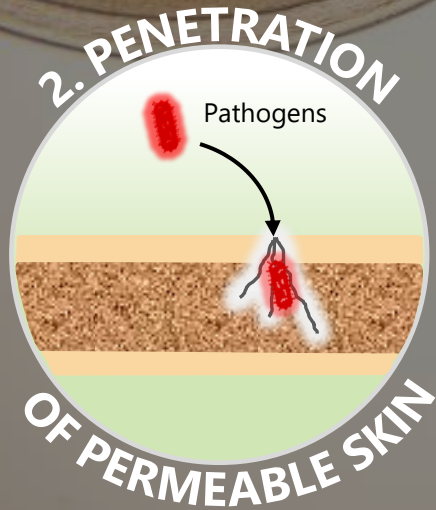
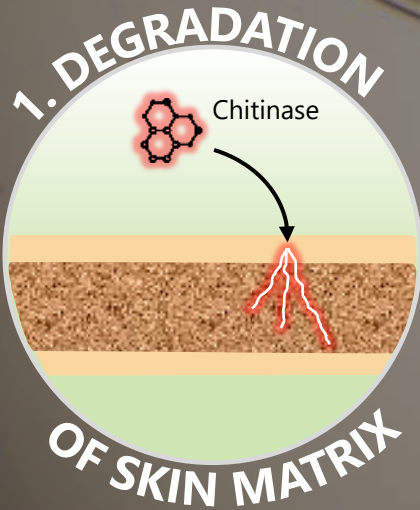
The selective secretion of polysaccharides - chitinase compounds leads to degrading of skin matrix of nematodes in egg, larval and adult stage. As a result, the permeability of worm skin is increased. Consequently, pathogens can penetrate the skin, weaken and kill the host.

SELECTIVE SECRETION

Release of targeted compounds

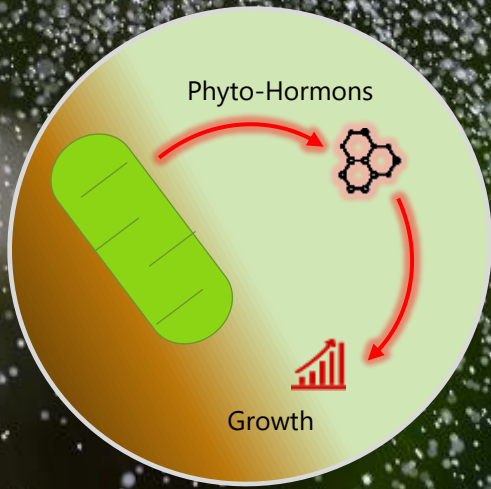


THE NATURAL WAY





GROWTH CONTROL



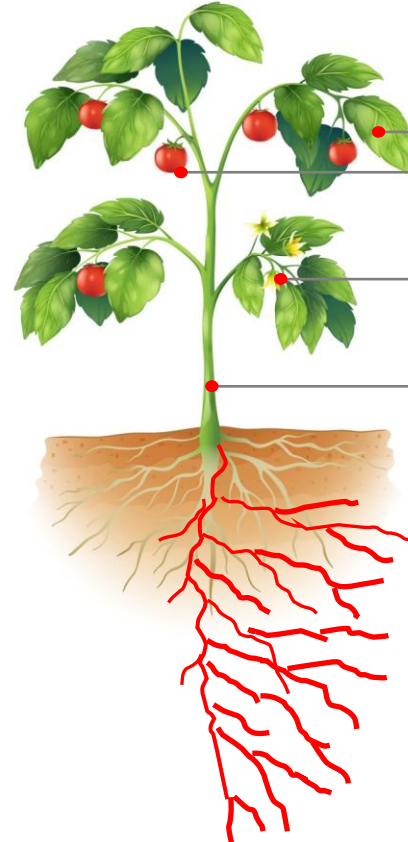
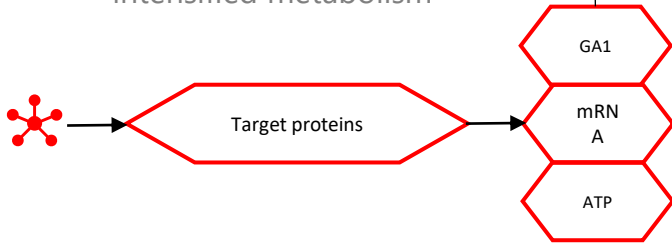
GROWTH CONTROL

The forced secretion of phyto-hormons such as Gibberellin, Cytokinin, Auxin, Ethylene, etc. can control the vegetative growth of roots and leaves, plant vigor, ripening and development of fruits.

GROWTH CONTROL

FORCED SECRETION

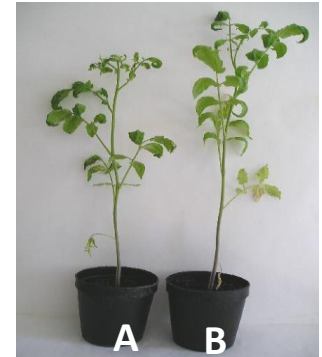
of target proteins leads to intensified metabolism



PROMOTING

of growth-related factors:

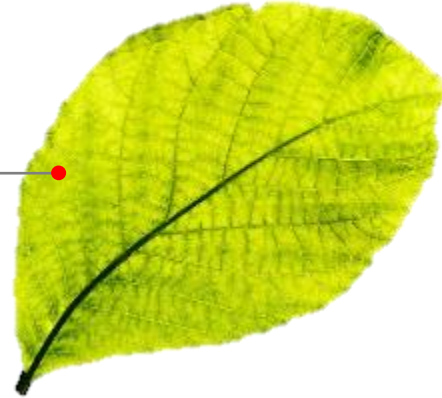
- Roots
- Shoots
- Leaves
- Fruits
- Ripening
- Vigor
- Yield
- Size
- Weight
- Taste
- Quality
- ...



QUICKER. UPPER. BETTER.

PHOTOSYNTHESIS

Charge your plant with more power !



EARLIER RIPENING

Sell your products earlier than your competitors !

STAND OUT FROM THE CROWD

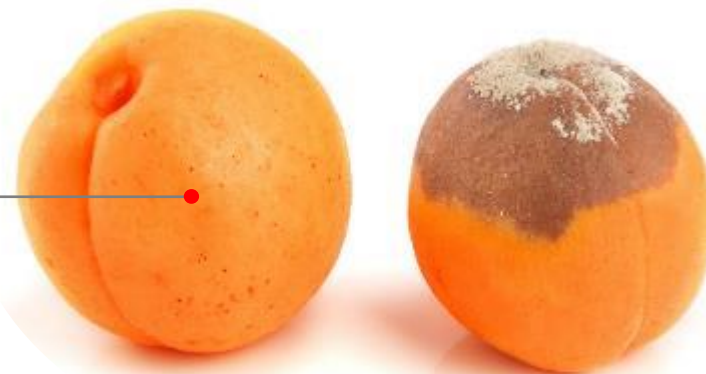


HARVEST

Increase your yield and revenues !

QUALITY

Beautiful and tasty fruits with long shelf time





EPSOMIT

EPSOMIT FACTSHEET

DESCRIPTION

EPSOMIT is a premium advanced immunity activator and growth stimulant for stress control and increase of productivity on all crops.

Topseller.
Best price-performance-ratio.

FEATURES



Growth enhancement



Abiotic stress tolerance

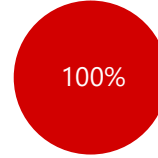


Biotic stress resistance



Organic farming

COMPOSITION



■ Magnesium sulphate hepta hydrate $MgSO_4 \cdot 7H_2O$

ELEMENTS



Magnesium oxide (MgO)...18.2 % w/w
Sulphur trioxide (SO₃).....35.0 % w/w

USE



All crops



Foliar spray (recommended), fertigation, root soak, soil drench, seed priming



Standard dosage 1 kg/hectare
1-2 applications per period
First application 3-5 leave stage

APPLICATION



500 Liter



1 kg



Agitate



Apply 1ha

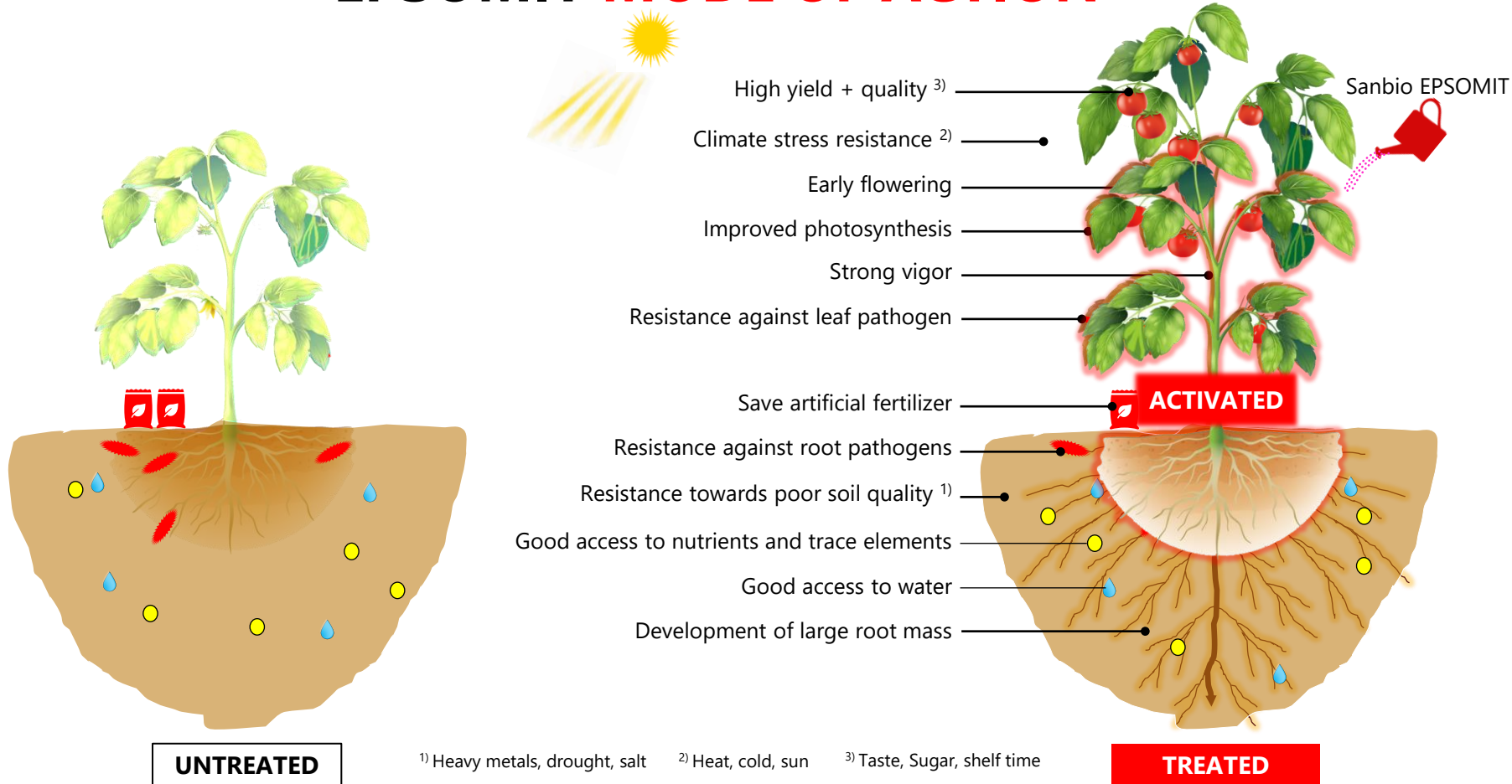
Mixing with most fertilizers and plant protection chemicals is possible.

PACKING



1 / 5 / 25 / 500 kg

EPSOMIT **MODE OF ACTION**



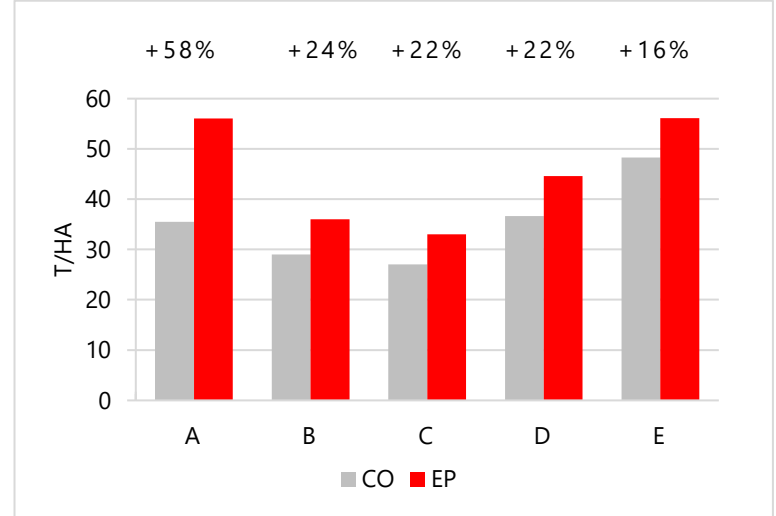
EPSOMIT USED ON **WHEAT**



+20%
average

IMPROVED PRODUCTIVITY

Using EPSOMIT results in growth and yield improvement over the leading synthetic standards



CO=Control (untreated lot)

EP=EPSOMIT (treated lot)

A=Variety „Maali“, Jendouba, TN, 2016, 1kg/ha, dry season

B=Variety „Nasr“, Medjes El Baab , TN, 2016, dry season

C=Variety „Maali“, Qued Zarga, TN, 2017

C=Variety „Maali“, Bizerte, TN, 2018, 2kg/ha

D=Variety „Monastir“, Beja, TN, 2018, 2kg/ha

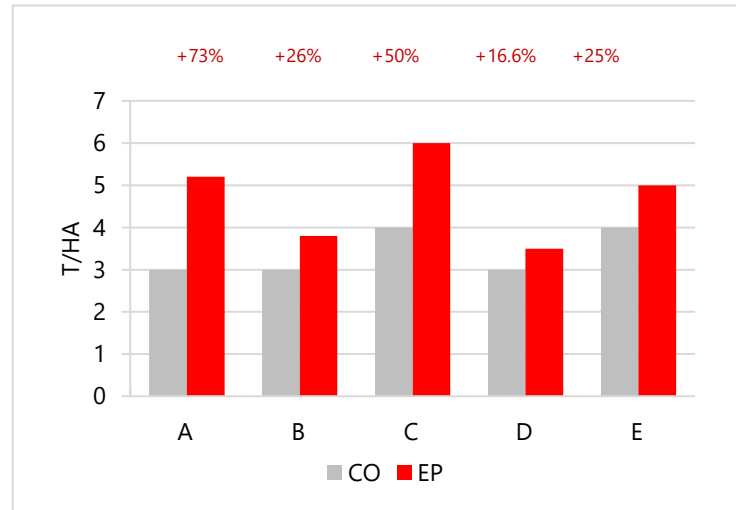
EPSOMIT USED ON VEGETABLES



+38%
average

IMPROVED PRODUCTIVITY

Using EPSOMIT results in in growth and yield improvement over the leading synthetic standards.



CO=Control (untreated lot)

EP=EPSOMIT (treated lot)

A=Tomato, Bekalta, Tunisia, 2015, 1kg/ha

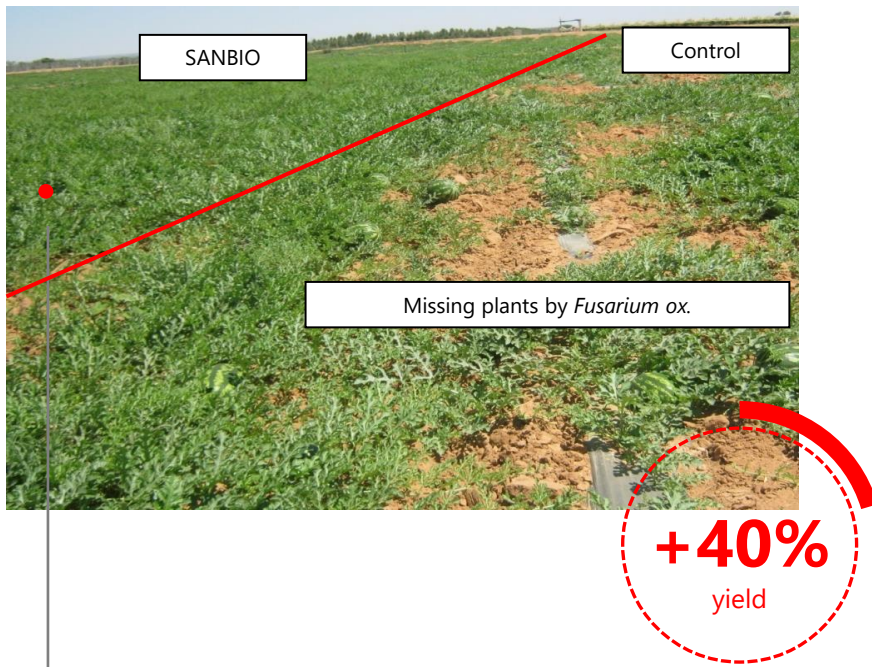
B=Tomato, Bekalta, Tunisia, 2016, 1kg/ha

C=Pepper, Tunsia, 2016, 1kg/ha

D=Eggplant, Teboulba, TN, 2016, 1kg/ha

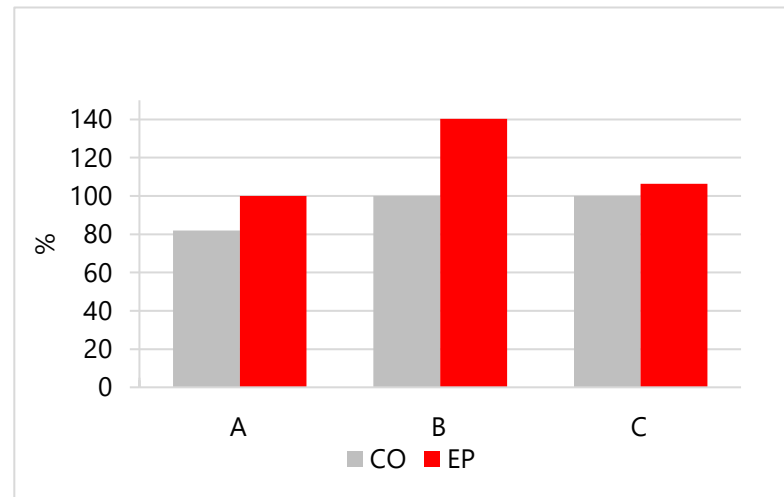
E=Zucchini, Teboulby, TN, 2016, 1kg/ha

EPSOMIT ON FUSARIUM INFESTED MELONS



IMPROVED HEALTH AND PRODUCTIVITY

Using EPSOMIT results in 2% infested plants on the treated plot only compared to 20% infested plants on the control plot. The yield and sugar content was increased on treated plot.



CO=Control (untreated lot)

EP=EPSOMIT (treated lot)

Watermelon: Efficacy of EPSOMIT on major pathogen *Fusarium oxy.*

A=Percentage of healthy non-infested melon plants after infestation of plot by *Fusarium oxy.* infestation evaluated two days after treatment

B=Yield of watermelon „Cariston“, 1.5kg Planta + 1kg Epsomit

C=Sugar content melon, 1.5kg Planta + 1kg Epsomit

Centre de Recherches Agricoles à Sidi Bouzid, TN, 2015

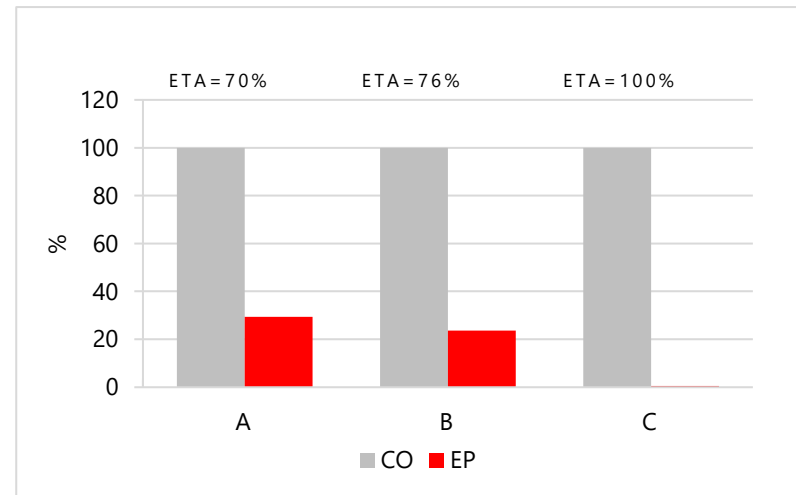
EFFICACY OF EPSOMIT ON **INFESTED OLIVES**



+ 100%
efficiency

IMPROVED PRODUCTIVITY

Product efficacy of EPSOMIT on major pathogens causing root rot and wilt diseases wilting (*Fusarium solani*, *F. oxysporum*, *Pythium sp*, *Rhizoctonia solani verticillium dahliae*)



CO=Control (untreated lot)

EP=EPSOMIT (treated lot)

Product efficacy of EPSOMIT on major pathogens causing root rot and wilt diseases

wilting (*Fusarium solani*, *F. oxysporum*, *Pythium sp*, *Rhizoctonia solani verticillium dahliae*)

A=Disease incidence, treatment one week after inoculation

B=Disease incidence, treatment and inoculation at the same time

C=Disease incidence, treatment one week before inoculation

Centre de Recherches Agricoles à Sidi Bouzid, TN, 2015

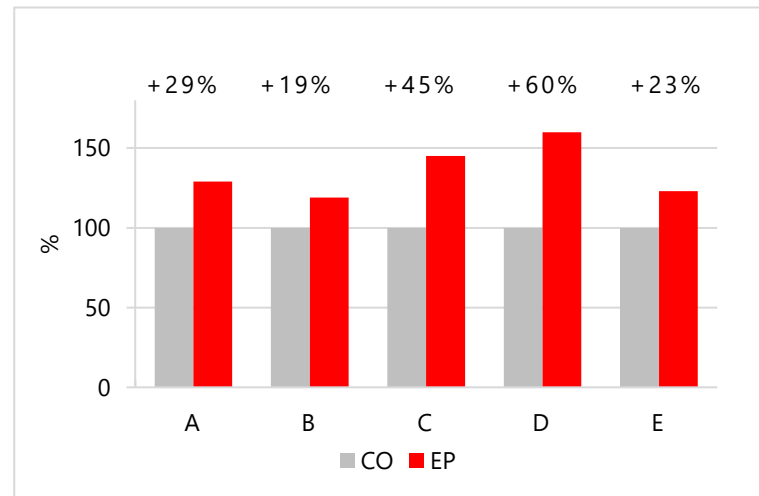
EPSOMIT ON FRUITS



+35%
average

IMPROVED PRODUCTIVITY

Using EPSOMIT results in in growth and yield improvement over the leading synthetic standards.



CO=Control (untreated lot)

EP=EPSOMIT (treated lot)

A=Citrus „Thomson Navel“, B=Meksi Anslı, C=Washington Navel“,

Bou Argoub, TN, 2015, 2.5kg/ha EP + 2.5kg/ha PL

D=Table grapes „Muskat Italia“, Mornag, TN, 2015, 1kg/ha EP + 1kg/ha

PL + 2.5L/ha VI

E=Strawberry „Camarosa“, Tazerka, TN, 1kg/ha EP + 1kg/ha PL



TITAN

TITAN FACTSHEET

DESCRIPTION

TITAN is a premium advanced immunity activator and growth stimulant for stress control and increase of productivity additionally water transpiration control on all crops.

Special product.

USE



Palm trees



Foliar spray



Standard dosage for palm trees:

0.5 L per tree

1-2 applications per pollination period

FEATURES



Growth enhancement



Abiotic stress tolerance



Biotic stress resistance



Water transpiration control

COMPOSITION

Magnesium sulphate heptahydrate
water of crystallisation

Titanium

Water

Citric acid

ELEMENTS



MgO, SO₃, Ti

APPLICATION



500 Liter
Water



0.5 L
Titan



Agitate



Spray
1 ha

PACKING



1/10/200/1000 L



PLANTA

PLANTA FACTSHEET

DESCRIPTION

PLANTA is a premium advanced immunity activator and growth stimulant for stress control, increase of soil fertility and productivity on all crops.

Premium product.

USE



All crops



Fertigation, root soak, soil drench, seed priming



Standard dosage 1.5 kg/hectare
1-2 applications per period
First application at early growth period

FEATURES



Growth enhancement



Abiotic stress tolerance



Biotic stress resistance

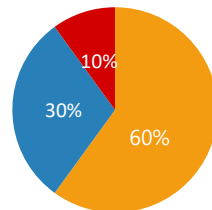


Soil fertility



Organic farming

COMPOSITION



■ Magnesium sulphate hepta hydrate $MgSO_4 \cdot 7H_2O$

■ Algae extract

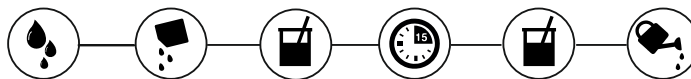
■ Blend of microorganisms

ELEMENTS



MgO , SO_3 , K_2O , Fe, B, Mn, P_2O_5

APPLICATION



500 Liter
lukewarm
water

1.5 kg
PLANTA

Agitate

Maturing
15 min

Agitate

Apply
1 ha

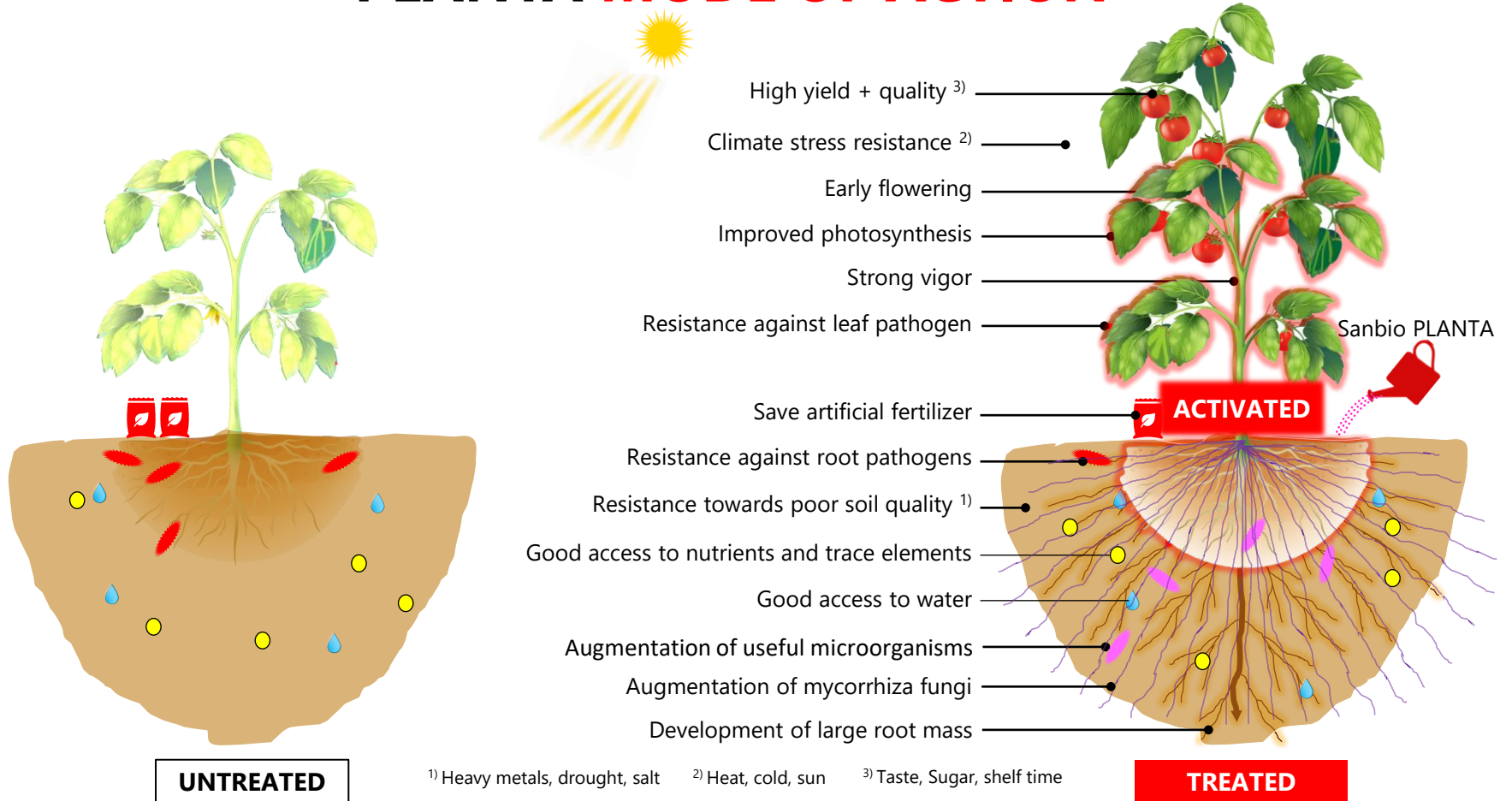
Mixing with most fertilizers is possible. Do NOT apply SANBIO® PLANTA with plant protection agents at the same time. Wait 14 days to use SANBIO® PLANTA in that case.

PACKING



1 kg

PLANTA **MODE OF ACTION**



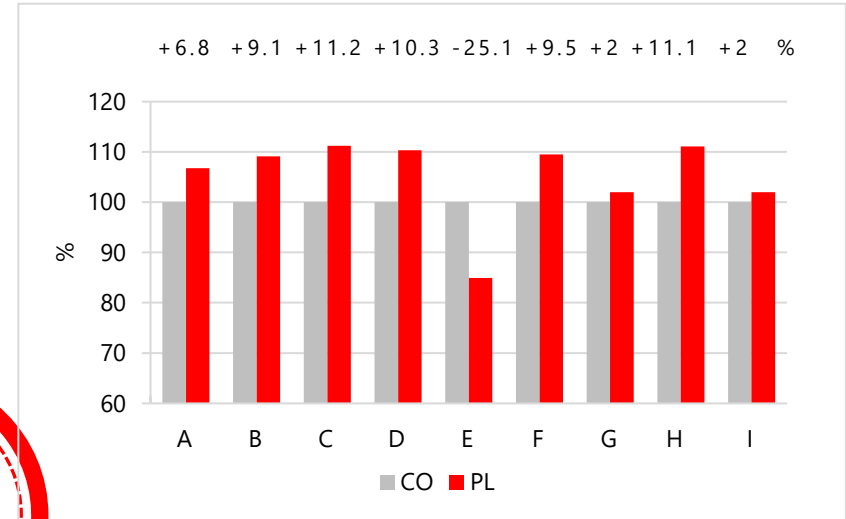
PLANTA USED ON SUGAR BEET, MAIZE, WHEAT



+37%
average cross

IMPROVED PRODUCTIVITY & QUALITY

Using PLANTA results in yield improvement and quality.



CO=Control (untreated lot)

PL=PLANTA (treated lot)

2016: Sugar beet „Annika“, Tröglitz, DE, 1.5kg/ha PLANTA

A=Yield B=Sugar yield C=Potassium D=Natrium E=AminoN

2017: Maize „Ricardo“, Tröglitz, DE, 1.5kg/ha PLANTA

F=Yield G=TS Protein

2018: Winter wheat, Tröglitz, DE, 2x1.5kg/ha PLANTA

H=Yield, I=Protein

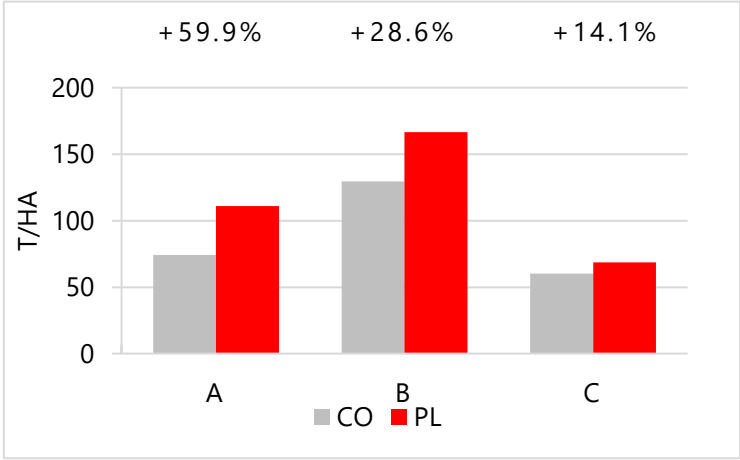
EFFECTS OF PLANTA ON PATHOGENS (*FUSARIUM*, *MILDEW*, *FIRE BLIGHT*) INFESTED PEPPER, TOMATO AND PEAR



+34%
average, cross

IMPROVED RESISTENCE & PRODUCTIVITY

Using PLANTA results in high resistance against the pathogens and yield improvement.



CO=Control (untreated lot)
PL=PLANTA (treated lot)
A=Sweet pepper, Bekalta, TN, 2016, 3.7 kg/ha EPSOMIT + 3.7 kg/ha PLANTA, no impact of Fusarium oxy. infection was observed
B=Tomato „Sahel“, Bekalta, TN, 2016, 4 kg/ha EPSOMIT + 4 kg/ha PLANTA, no impact of Mildew infection was observed
C=Pear „William“, Bekalta, TN, 2018, 3x 1.5 kg/ha PLANTA, reduced impact of Fire Blight infection was observed
INRAT, Laboratoire de Biotechnologie Appliquée à l'Agriculture, Tunisia

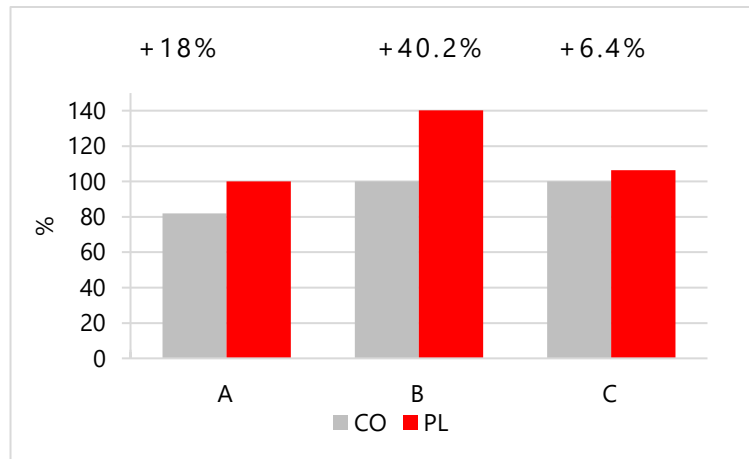
EFFICACY OF PLANTA ON **MAJOR PATHOGEN** **FUSARIUM OX. ON WATERMELONS**



+21%
average

IMPROVED RESISTENCE & PRODUCTIVITY

Using PLANTA results in high resistance against the pathogens and yield improvement.



CO=Control (untreated lot)

PL=PLANTA (treated lot)

Watermelon: Efficacy of PLANTA on major pathogen Fusarium oxy.
A=Percentage of healthy non-infested melon plants after infestation of plot by Fusarium oxy. infestation evaluated two days after treatment
B=Yield of watermelon „Cariston“, 1.5kg Planta + 1kg Epsomit
C=Sugar content melon, 1.5kg Planta + 1kg Epsomit



VITAL

VITAL FACTSHEET

DESCRIPTION

VITAL is a advanced immunity activator and growth stimulant for root recovery used in fertigation of all crops.

Special product.

FEATURES



Growth enhancement



Abiotic stress tolerance

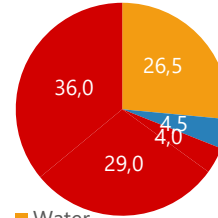


Biotic stress resistance



Root recovery

COMPOSITION



Water

Nitrogen

Magnesium Sulphate Heptahydrate

Algae extract

ELEMENTS



CaO, Fe, K₂O, MgO, Mn, SO₃, P₂O₅

USE



All crops



Fertigation, root soak, soil drench, seed priming



Standard dosage 5-10 L/hectare
1-2 applications per period
First application at early growth period or on demand

APPLICATION



500 Liter
Water

5-10L
Vital

Agitate

Spray
1 ha

PACKING



1/10 L

ROOT RECOVERY OF **CUCUMBER** DAMAGED BY **ROOT-KNOT-NEMATODES**



Weakened plants due to heavy infection by root-knot nematodes, before treatment



Heavy infected roots, before treatment



Preparation of working solution



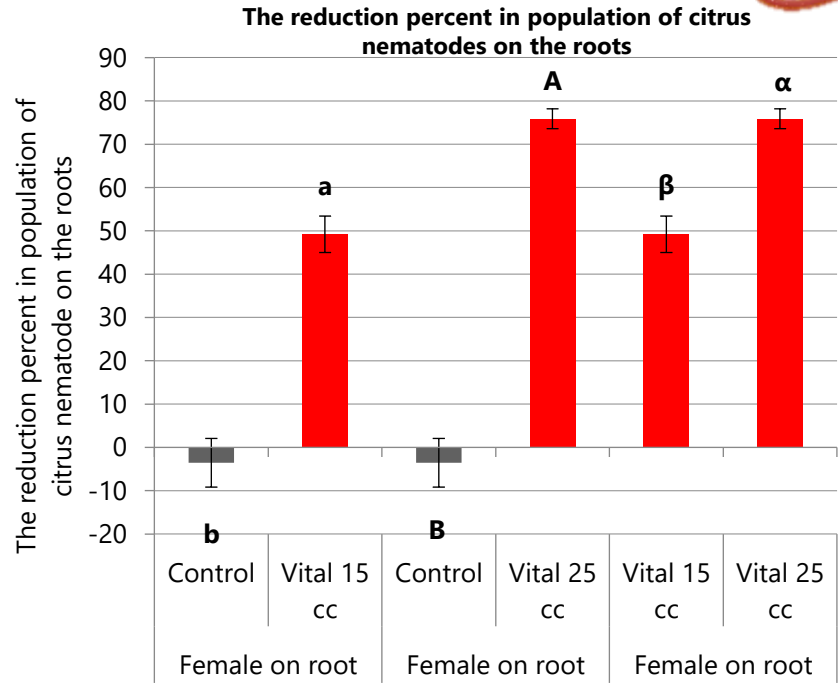
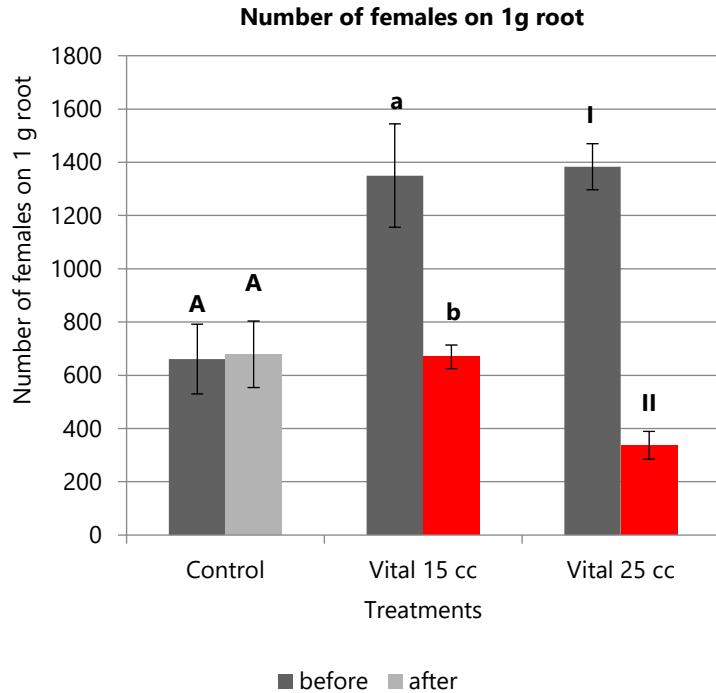
Development of new roots two weeks after first treatment



Total recovery of large root mass eight weeks after first treatment

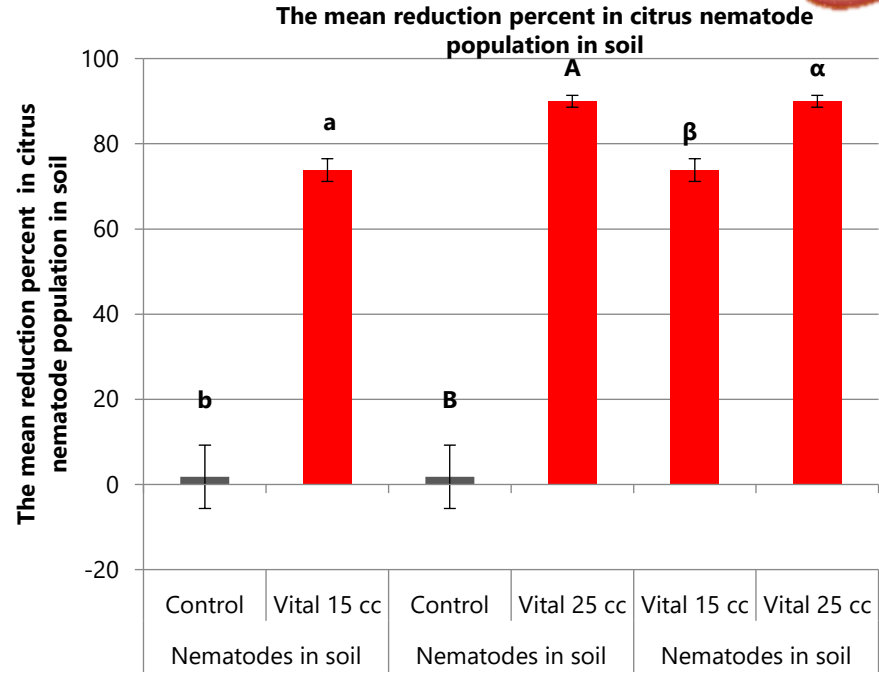
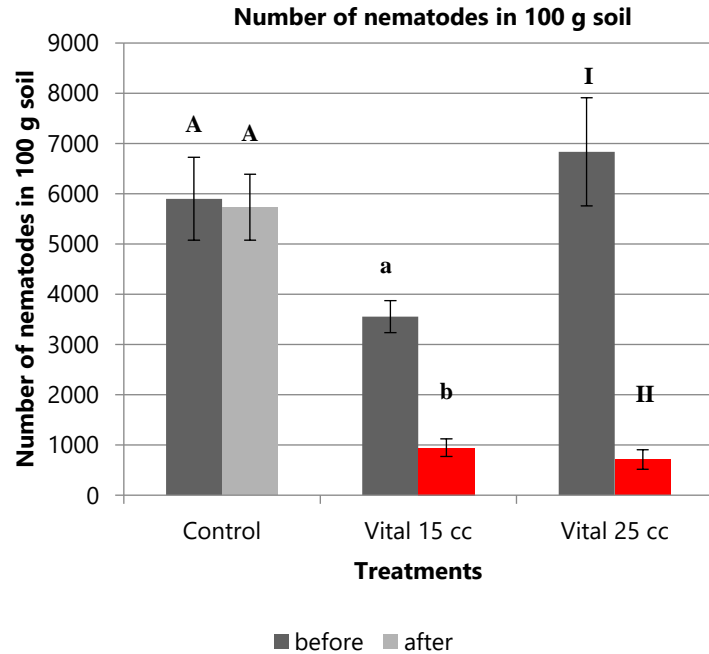
EFFECTS OF VITAL ON CITRUS-NEMATODE

Tylenchulus semipenetrans



EFFECTS OF VITAL ON CITRUS-NEMATODE

Tylenchulus semipenetrans

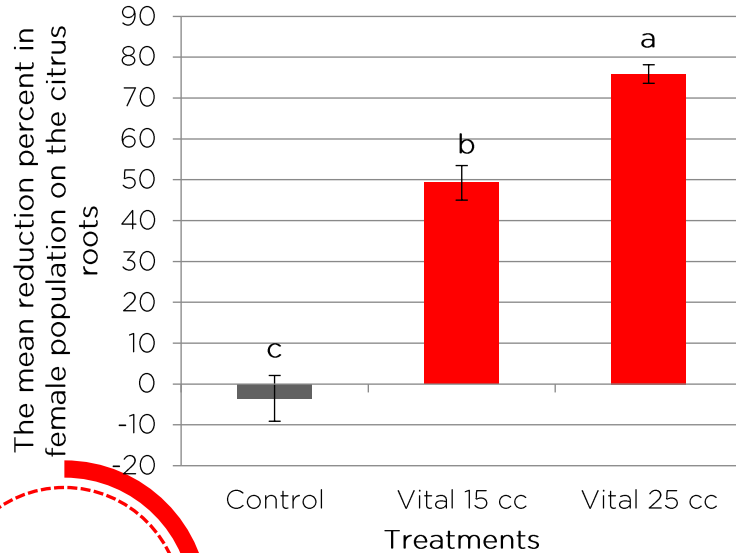


EFFECTS OF VITAL ON CITRUS-NEMATODE

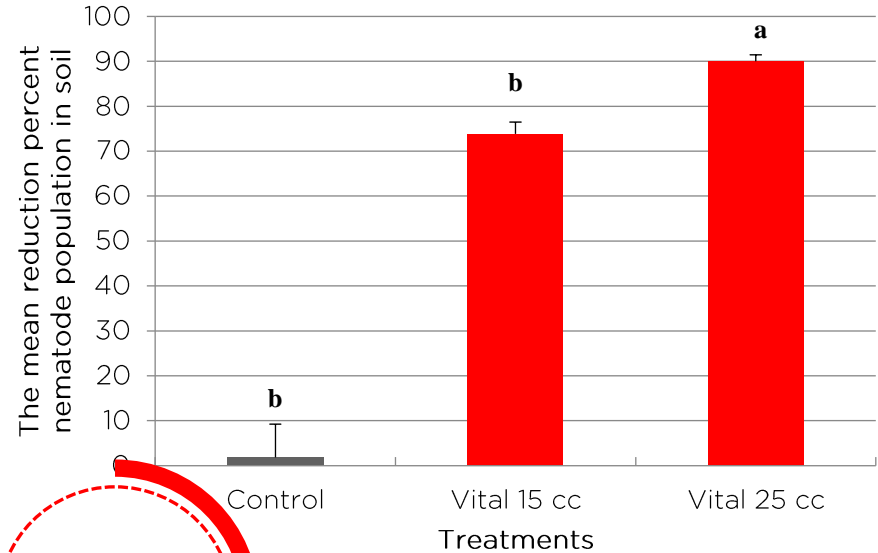
Tylenchulus semipenetrans



The mean reduction percent in female population on the citrus roots



The mean reduction percent in female population in soil



80%

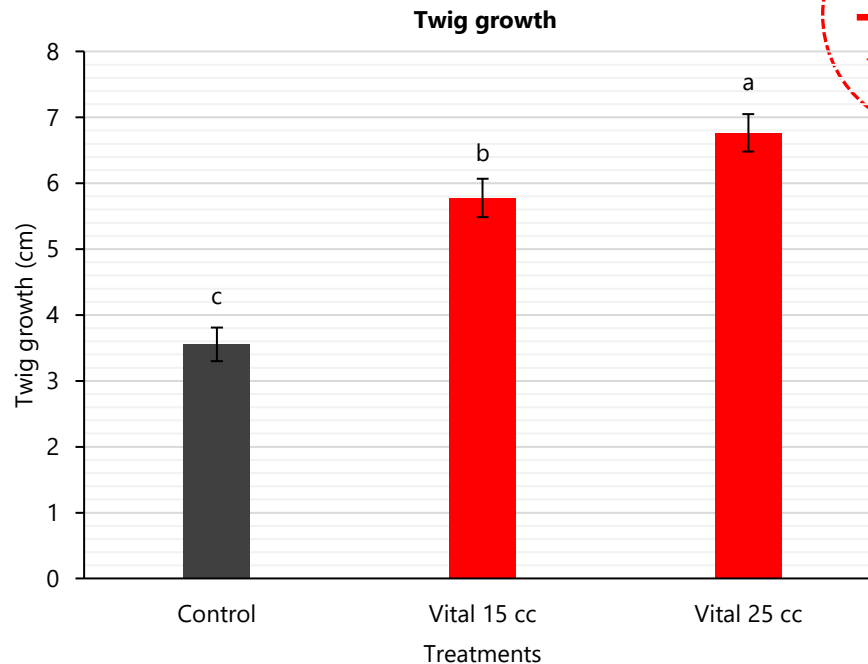
Reduction
on roots

88%

Reduction
in soil

EFFECTS OF VITAL ON CITRUS-NEMATODE

Tylenchulus semipenetrans



+93%

Twig growth

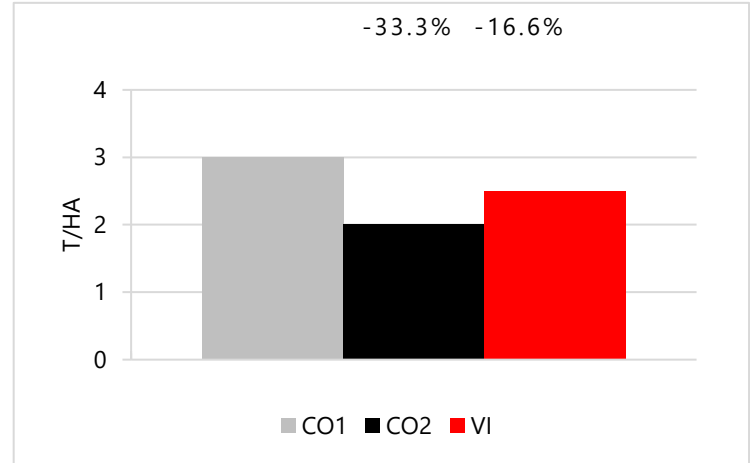
ROOT RECOVERY OF PEPPER DAMAGED BY ROOT-KNOT-NEMATODES



+25%
yield

RECOVERY & PRODUCTIVITY

Using VITAL results in fast recovery roots were damaged of root-knot-nematodes. The yield was increased by 25%.



CO1=Non-infected greenhouse, untreated
CO2=Infected greenhouse, untreated
VI=Infected greenhouse, treated with VITAL
Bekalta, TN, 2015

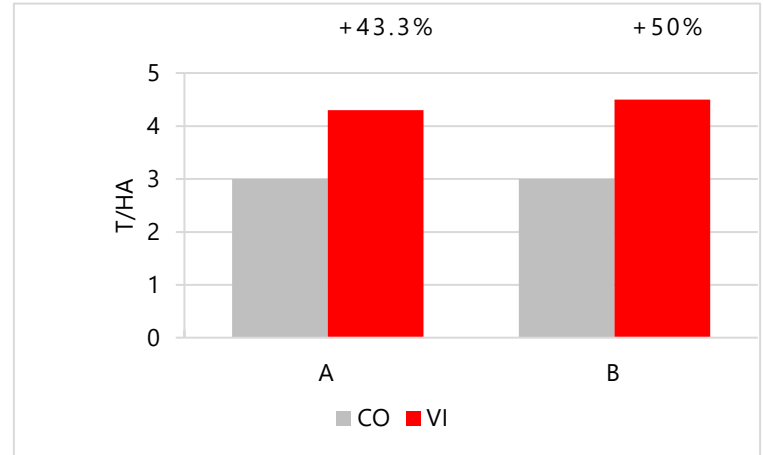
ROOT RECOVERY OF TOMATO & PEPPER DAMAGED BY ROOT-KNOT-NEMATODES



+46%
yield

RECOVERY & PRODUCTIVITY

Using VITAL results in fast recovery roots were damaged of root-knot-nematodes. The yield was increased by 46% av.



CO=Control (untreated lot)
VI=VITAL (treated lot)

A=Tomato „Sahel“, 2 applications VITAL, Bekalta, TN, 2016
B=Sweet pepper, 2 applications VITAL, Bekalta, TN, 2016

**JUST DO IT.
APPLY NOW!**

GET IN TOUCH WITH US

SANBOS GmbH



Geraer Strasse 14
D-06712 Gutenborn-Drossdorf
Germany



+49 3441 53987-3



+49 3441 53987-4



info@sanbio.eu

youtube: sanbio sanbos



www.sanbio.eu



SANBIO

A brand of SANBOS.



Jörg MEYER
Founder and CEO